

Till Sörensen

curriculum vitae

Professional Experience 2008 - 2010

Woods Bagot

Project Architect and Project Leader
Sydney, Australia

2005 - 2008

Voorderhake Architects

Project Architect
Sydney, Australia

2004 - 2005

Innovarchi Architects

Project Architect
Sydney, Australia

2002 - 2002

Funktionsraum & Graftlab Architects

Architecture design competition
Montceau les-Mines, France

2001 - 2004

Funktionsraum

Partner of a Design Studio
Berlin, Germany.

2001 - 2004

Werk5

Project Leader in model-making studio
Berlin, Germany

2000

Marlies Hestermann Architekten

Internship as part of university degree
Bremen, Germany

1998 - 2000

Baesler, Schmidt und Partner

Architectural Assistant
Berlin, Germany

Education 1998 - 2002

Bachelor of Architecture

University of Applied Sciences
Berlin, Germany

1996 - 1998

Civil engineering

University of Applied Sciences
Bremen, Germany

1997

German Carpenter Championships

Hamburg, Germany.

1994 - 1996

Carpentry Apprenticeship

Bremer Holzbau GmbH

1993 - 1994

Community Service

(as alternative to military service)

Flensburg, Germany

1993

German highschool diploma

Flensburg, Germany

Prizes / Awards 2001

Winner of a European architecture design competition between France, Germany and Spain funded by the European Union.

Language skills

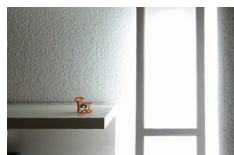
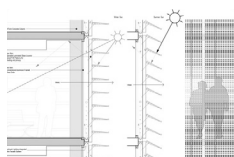
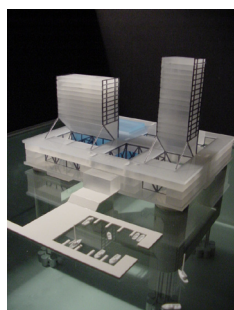
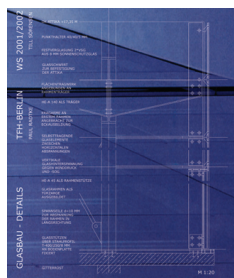
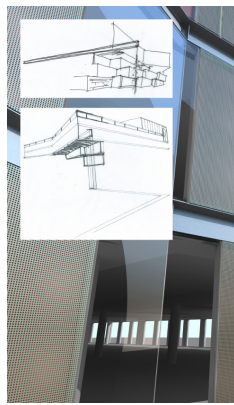
German, English, French (word and writing),
basic Spanish

Computer knowledge

Archicad, REVIT, Autocad 2009, Adobe Creative Suite, Cinema 4d, Dreamweaver, Vectorworks, Mac OSX, MS Office

Interests

Field hockey (state level), floorball, cinema,
music and travel



Till Sörensen

Project specific experience

WOODS BAGOT (2008 - 2010)



Diplomatic Mission Complex of Kuwait:

- Residential / Commercial
- Deakin - Canberra
- Client: State of Kuwait
- Approved WA (DA) documentation
- Currently in tender documentation stage
- AUD 30million project
- Project Leader

Qantas Seamless Transfer Lounge:

- Commercial / Transport
- Sydney International Airport
- Client: Sydney International Airport Authority
- Temporary building currently under construction
- BIM documentation with a detailed 3D model

Park Life:

- Mixed use development
- Sydney Olympic Park
- Client: GPT Group
- Architectural and landscape design competition in collaboration with 360degrees landscape architects
- Re-evaluation of an existing masterplan
- 1:100 DA documentation for one commercial building
- 1:500 SD documentation for the rest of the development.
- Creating a new workplace culture by fusing Architecture, Landscape and Public Domain
- Project Leader

Section 63:

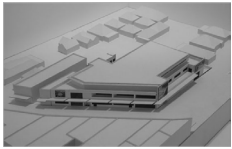
- Commercial / Retail
- CBD Canberra, adjacent to Vernon Circle
- Client: City West Property Holdings
- Approved WA (DA) documentation
- Submitted tender documentation
- Currently in negotiations with potential tenants
- 4 separate office buildings with retail on GF
- More than 100 000sqm NLA in total
- Project Leader

Till Sörensen

Project specific experience

VOORDERHAKE

(2005 - 2008)



Bexley Village:

- Commercial / Residential
- 290-298 Forest Road, Bexley
- Client: Namsauh Holdings
- Approved DA documentation
- 2800sqm Supermarket
- 1500sqm Retail
- 1300sqm Commercial
- 10 apartments with a mix of 1, 2 and 3 bedrooms
- Project Architect

Hervey Bay Super Centre:

- Retail
- Boat Harbour Drive, Hervey Bay, QLD
- Client: Benchmark Australia
- Approved DA documentation
- More than 25 000sqm of retail space over three levels
- Project Architect

Crows Nest Shopping Centre:

- Commercial / Residential
- Willoughby Road
- Client: Benchmark Australia
- DA documentation
- 2500sqm Supermarket
- 1500sqm Supermarket
- 1000sqm Retail
- 4 apartments
- Project Architect

Terry Ringland Office:

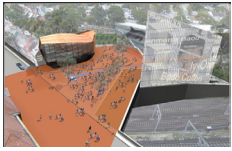
- Commercial / Interior
- Maroubra Road, Sydney
- Client: Terry Ringland
- Approved DA documentation
- Completed construction
- 90sqm commercial space over two levels
- Project Architect

Till Sörensen

Project specific experience

INNOVARCHI

(2004 - 2005)



Red Place:

- Commercial / Residential
- Redfern Station
- client: Aboriginal Cultural House
- SD documentation
- 3 separate buildings surrounding the sacred red place
- 3D modelling and CAD combination
- Project Architect

Surfers Infill:

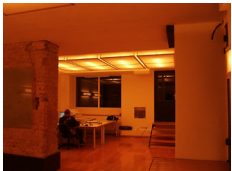
- Residential
- Gold Coast, QLD
- Client: private
- DA documentation
- Multi-story residential tower directly next to the beach
- Project Architect

Auckland Fringe:

- Masterplan
- Nelson Quarter Depot Site, Auckland, New Zealand
- Client: private
- DA documentation
- 3 hectares site in the CBD
- 15 individual buildings with expansive public spaces
- Ground floor retail activates the precinct
- Project Architect

FUNKTIONSRaum

(2001 - 2004)



Design Studio:

- Shared office with five other graduate architects
- Oderstrasse, Berlin, Germany
- Designed and constructed by all six partners
- Architectural and design competitions
- Small residential alterations
- Partner

WERK 5

(2001 - 2004)



Model making Studio:

- High-end architectural model production
- Maybachufer, Berlin, Germany
- Clients include Libeskind, Bothe Richter Tehrani, Sauerbruch & Hutton, Gerkan Marg and Partner
- Project Leader